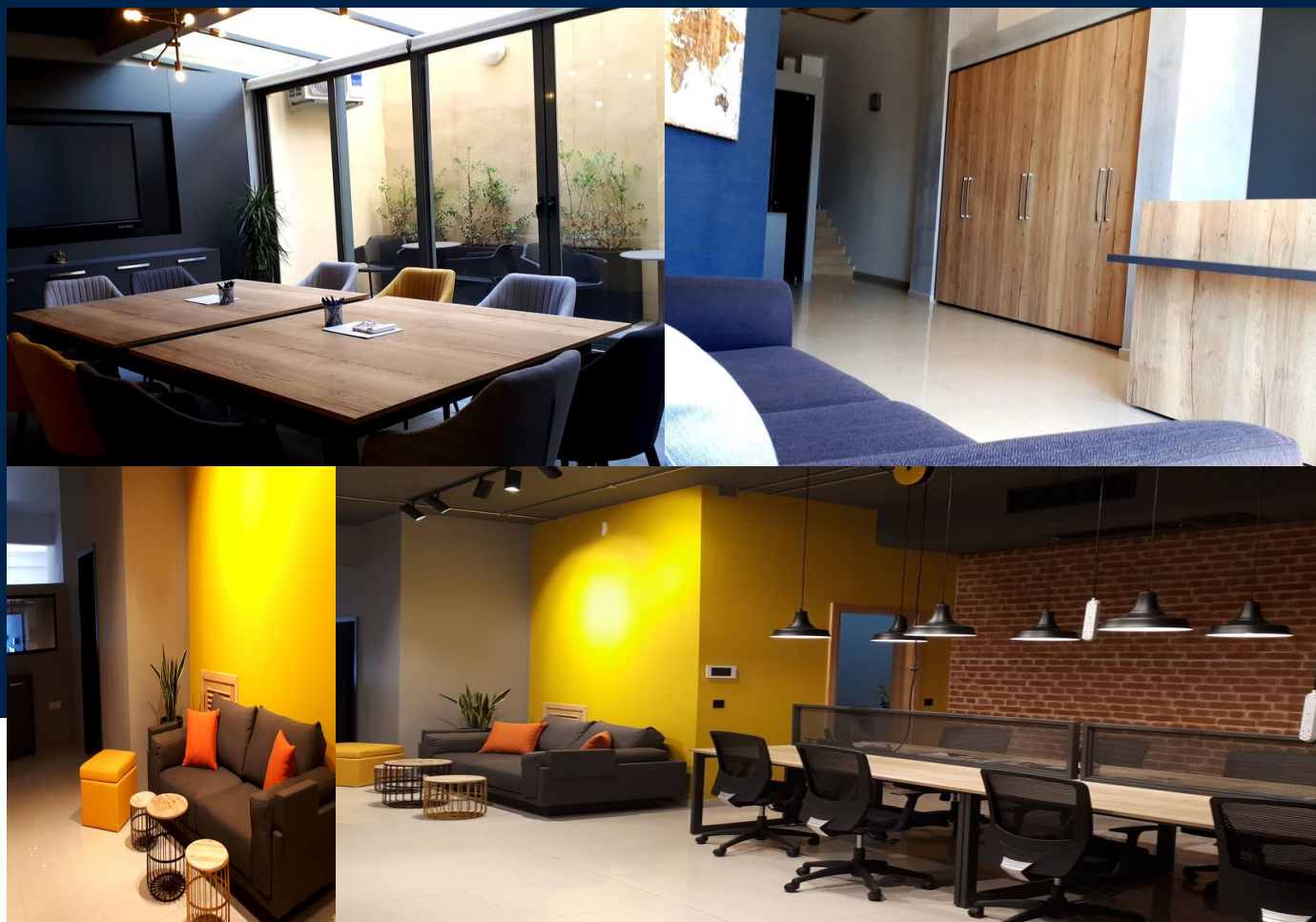


Office

Sliema Malta

€4,500/mth.

MLS ID 200144



Amenities and Features

Parking Places: 1 Parking Places

Seafront ground floor office in Sliema, measuring approximately 167sqm with terrace at the back. One car space included in the price



Benji Psaila

benji.psaila@maltasothebysrealty.com

Find a home that suits your lifestyle.

Portomaso Marina, T. (+356) 2010 8077, M. (+356) 9910 8070, E. portomaso@sir.com.mt

Only
Malta | **Sotheby's**
INTERNATIONAL REALTY

maltasothebysrealty.com   

Each Office is Independently Owned & Operated